



## MULTI-PURPOSE USES FOR DIFFERENT APPLICATIONS

The QuickScan reader series is Datalogic's value line of general purpose handheld data collection products. The QuickScan I QD2100 linear imaging reader is an entry level product that is perfect for use in retail and office environments plus activities associated with couriers and postal services.

## READING CAPABILITY

The QD2100 reader is small, lightweight and its ergonomic design is comfortable to use during daily operations. It offers snappy reading performance especially on hard-to-read bar codes and is capable of reading a wide range of symbologies including the majority of 1D codes plus GS1 DataBar™ linear codes. The QD2100 reader features Datalogic's patented 'Green Spot' for good read feedback directly on the code. When in Stand Mode, the Green Spot remains on to show the operator where to position the code for quick and intuitive reading.

## USER REPLACEABLE WINDOW PACK LOWERS THE COST OF OWNERSHIP

Like the QuickScan L reader, the QD2100 reader has been designed with durability in mind. One of the most vulnerable features of any scanner is damage to the scan window. When such incidents happen, the scanner may have to be replaced. The QD2100 scanner was specifically designed so that a replacement window pack can be ordered to replace damaged or scratched windows without having to send the scanner away for repairs. This helps to reduce the total cost of ownership during the life of the scanner and helps to ensure that it is always available for use.



### FEATURES

- Datalogic's Green Spot for good read feedback
- User replaceable scan window
- Two multi-interface options support the most popular interface combinations
- Supports GS1 DataBar™ codes
- Remote host download functions (Model QD2110)
- Water and Particulate Sealing Rating: IP42
- Drop resistance to 1.5 m / 5.0 ft
- EASEOFCARE Service Plans offer a wide range of service options to protect your investment, ensuring maximum productivity and ROI

### INDUSTRY-APPLICATIONS

- Retail: Point of Sale, Mobile Marketing Capabilities, Age Verification
- Commercial Services: Postal, Banks, Public Administration and Utilities
- Access Control, Transportation and Entertainment

## TECHNICAL SPECIFICATIONS

### DECODING CAPABILITY

1D / LINEAR CODES	Autodiscriminates all standard 1D codes including GS1 DataBar™ linear codes.
POSTAL CODES	China Post
STACKED CODES	GS1 DataBar Expanded Stacked; GS1 DataBar Stacked; GS1 DataBar Stacked Omnidirectional

### ELECTRICAL

CURRENT	Operating (Typical): 340 mA @ 5 VDC Standby/Idle (Typical): 190 mA @ 5 VDC
INPUT VOLTAGE	QD2110: 4 -14 VDC; QD2130: 5 VDC +/- 10%

### ENVIRONMENTAL

AMBIENT LIGHT	100,000 lux
DROP RESISTANCE	Withstands repeated drops from 1.5 m / 5.0 ft onto a concrete surface.
ESD PROTECTION (AIR DISCHARGE)	20 kV
HUMIDITY (NON-CONDENSING)	5 - 95%
PARTICULATE AND WATER SEALING	IP42
TEMPERATURE	Operating: 0 to 50 °C / 32 to 122 °F Storage/Transport: -40 to 70 °C / -40 to 158 °F

### INTERFACES

INTERFACES	QD2110: RS-232 / IBM 46XX / USB Multi-Interface QD2130: RS-232 / USB / Keyboard Wedge / Wand Multi-Interface
------------	---

### PHYSICAL CHARACTERISTICS

COLORS AVAILABLE	Black; White
DIMENSIONS	17.0 x 7.1 x 6.6 cm / 6.7 x 2.8 x 2.6 in
WEIGHT	121.9 g / 4.3 oz

### READING PERFORMANCE

LIGHT SOURCE	Red LED 610-650 nm
PRINT CONTRAST RATIO (MINIMUM)	15%
READ RATE (MAXIMUM)	270 reads/sec.
READING ANGLE	Pitch: +/- 65°; Roll (Tilt): +/- 45°; Skew (Yaw): +/- 65°
READING INDICATORS	Beeper (Adjustable Tone); Datalogic 'Green Spot' Good Read Feedback; Good Read LED
RESOLUTION (MAXIMUM)	0.102 mm / 4 mils

### READING RANGES

TYPICAL DEPTH OF FIELD	Minimum distance determined by symbol length and scan angle. Printing resolution, contrast, and ambient light dependent. 4 mils: 2.0 to 11.0 cm / 0.8 to 4.3 in 5 mils: 1.5 to 15.0 cm / 0.6 to 6.0 in 7.5 mils: 0.8 to 25.0 cm / 0.3 to 10.0 in 10 mils: 0.8 to 38.0 cm / 0.3 to 15.0 in 13 mils: 1.9 to 45.0 cm / 0.7 to 18.0 in 20 mils: 2.5 to 65.0 cm / 1.0 to 26.0 in
------------------------	--

### SAFETY & REGULATORY

AGENCY APPROVALS	The product meets necessary safety and regulatory approvals for its intended use. The Quick Reference Guide for this product can be referred to for a complete list of certifications.
ENVIRONMENTAL COMPLIANCE LED CLASSIFICATION	Complies to China RoHS; Complies to EU RoHS IEC 60825-1 Class 1 LED Product

### UTILITIES

DATALOGIC ALADDIN™	Datalogic Aladdin configuration program is available for download at no charge.
REMOTE HOST DOWNLOAD	Lowers service costs and improves operations: QD2110

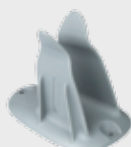
### WARRANTY

WARRANTY	5-Year Factory Warranty
----------	-------------------------

## ACCESSORIES

### Mounts/Stands

- 11-0360 Holder, Multi-Purpose, Black
- 11-0362 Holder, Multi-Purpose, Grey
- STD-QD20-BK Gooseneck Stand, Black
- STD-QD20-WH Gooseneck Stand, White



### Miscellaneous

- 11-0318 Replacement Windows, 5-Pack

